

# Boulder City Conservation Easement – 2012 and Beyond

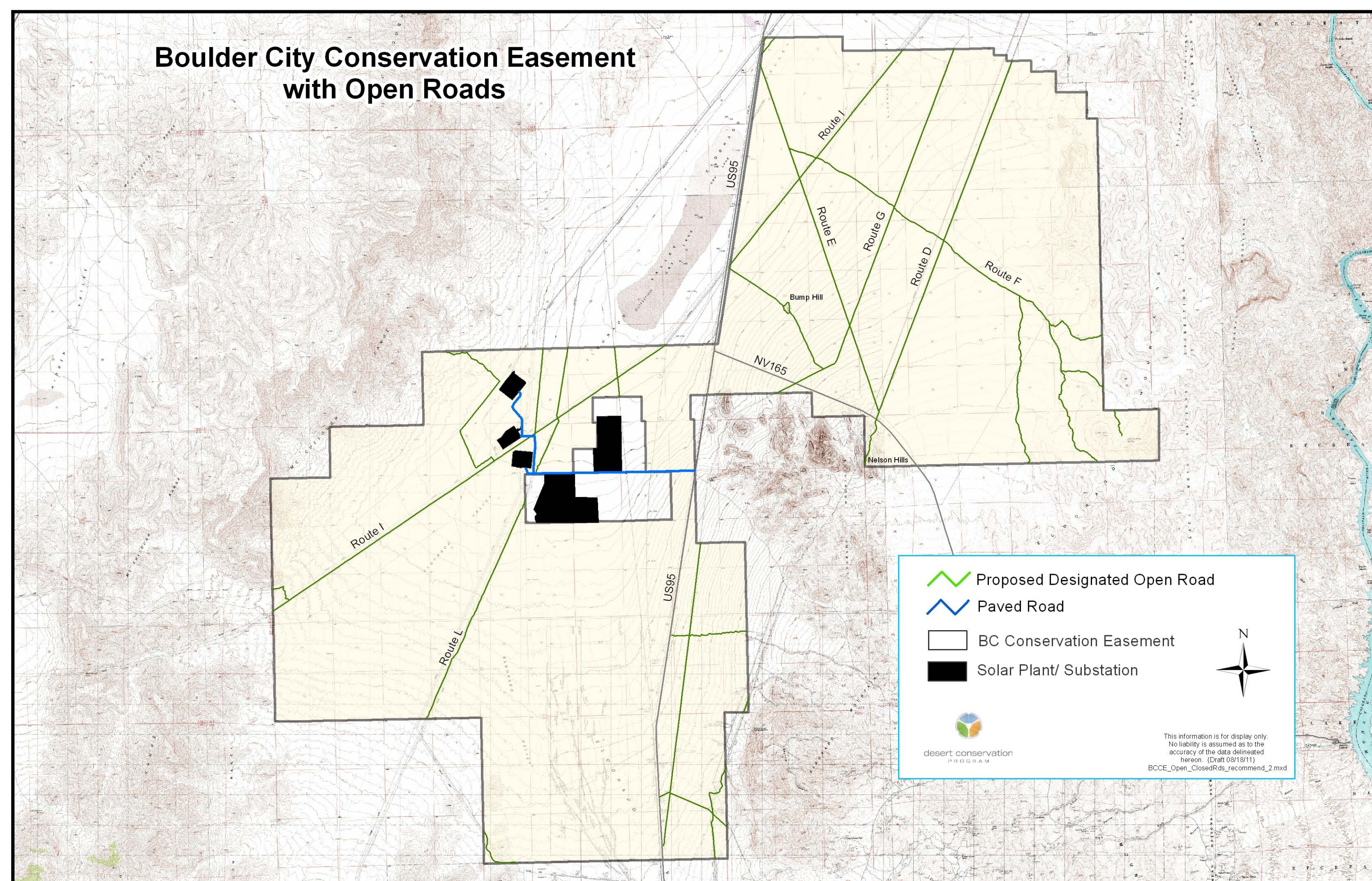
## History



- The Boulder City Conservation Easement (BCCE) is located in the Eldorado Valley in the southern part of Boulder City.
- The McCullough Mountains, Eldorado Mountains and River Mountains surround the valley.
- In 2010 the easement agreement was amended to clarify requirements for law enforcement and disturbance permitting.
- Funding for activities on the BCCE comes from Section 10 mitigation fees and occasionally from Southern Nevada Public Lands Management Act funds.

- Clark County obtained the conservation easement grant for 86,423 acres from Boulder City in 1995 for \$300,000.
- Boulder City may petition Clark County and US Fish and Wildlife Service to remove the easement grant from the property no earlier than 2045, and then only if certain conditions are met.
- The easement agreement specifies that easement law enforcement is to be provided by Clark County.
- Boulder City is responsible for permitting activities on the BCCE.
- There are 58 Right-of-Way Grants on the BCCE for power lines, gas pipelines, etc.

- There is an Energy Zone (“the doughnut hole”) inside the BCCE that is not a part of the BCCE.
- The Energy Zone and surrounding Boulder City land will soon be covered with solar generating plants.
- Activities on the BCCE significantly decrease with high gas prices.
- Excessive heat, cold and rain also significantly decrease activities on the BCCE.
- There are currently 95 miles of open roads on the BCCE (this does not include Highway 95 and 165).
- On open roads within the BCCE the speed limit is 25 miles per hour.



## Progress



Citations on the BCCE continue to go down. The City of Boulder City Police Department currently provides for law enforcement on the BCCE through a contract with the DCP.



DCP has completed the designation of open roads and is currently completing a GIS database that maps all signs, roads, restoration sites and ROW information.

## Future



SoCal Edison is planning to conduct restoration work on areas disturbed during Right Of Way work.



A project to install new tortoise guards, OHV barriers and kiosk(s) are scheduled for this year, with funds from SNPLMA.



Phase I Restoration is planned for November 2012 to enhance habitat.



## For further information

Please contact [brekke@ClarkCountyNV.gov](mailto:brekke@ClarkCountyNV.gov) for more information or go to <http://www.clarkcountynv.gov/Depts/dcp/Pages/BCCE.aspx>